



Venetian Diamond Throw & Cushions

by Kaffe Fassett



YARN

Rowan Summer Tweed

			Throw	Small Cushion
A	508	Oats	17 x50gm	2 x50gm
B	514	Reed	5 x50gm	1 x50gm
C	521	Storm	2 x50gm	1 x50gm
D	507	Rush	2 x50gm	1 x50gm
E	546	Loganberry	4 x50gm	1 x50gm
F	525	Blueberry	3 x50gm	1 x50gm
G	530	Toast	2 x50gm	1 x50gm
H	542	Mango	2 x50gm	1 x50gm
I	543	Sweetpea	2 x50gm	1 x50gm
K	509	Sunset	2 x50gm	1 x50gm

Large Cushion

A	548	Swirl	3 x50gm
B	551	Tonic	1 x50gm
C	546	Loganberry	1 x50gm
D	525	Blueberry	1 x50gm
E	530	Toast	1 x50gm
F	514	Reed	1 x50gm
G	550	Hedgerow	1 x50gm
H	549	Harbour	2 x50gm

NEEDLES

1 pair 5mm (no 6) (US 8) needles
4.50mm (no 7) (US 7) crochet hook (throw only)
5mm (no 6) (US 8) circular needle (large cushion only)

TENSION

16 sts and 23 rows to 10 cm measured over st st using 5mm (US 8) needles

EXTRAS

Small cushion

1 x 45cm (18in) cushion pad
½ m fabric – Kaffe Shot Cotton: Ecru 24

Large Cushion

1 x 60cm (24in) cushion pad
1m fabric – Kaffe Shot Cotton: Jade 41

FINISHED SIZE

Throw - Approx 128cm (50in) x 173cm (68in)

Small Cushion - Approx 45cm (18in) square

Large Cushion - Approx 60cm (24in) square

THROW

Using 5mm (US 8) needles and yarn A cast on 205 sts.
Beg and ending rows as indicated, using the **intarsia** technique as described on the information page, cont in patt from chart which is worked entirely in st st beg with a K row, until all 398 rows have been worked ending with RS facing for next row. Cast off.

MAKING UP

Press as described on the information page.

Edging

With RS facing, using 4.50mm (US 7) crochet hook and yarn B, attach yarn at centre of cast on edge, 1 ch (does NOT count as st), work dc s evenly around entire throw, work 3 dc s into each corner point, ss to dc at beg of round.
Round 1: 1 ch (does NOT count as st), 1 dc into each dc, working 3 dc s into corner point.
Work a further round as round 1.

Join in yarn G and work a further round. Fasten off.

SMALL CUSHION

Using 5mm (US 8) needles and yarn A cast on 72sts.
 Beg and ending rows as indicated using the **intarsia** technique as described on the information page cont in patt from chart, which is worked entirely in st st beg with a K row, until all 104 rows have been worked ending with RS facing for next row. Cast off.

LARGE CUSHION

Using 5mm (US 8) needles and yarn A cast on 68sts.
 Beg and ending rows as indicated using the **intarsia** technique as described on the information page cont in patt from chart which is worked entirely in st st beg with a K row, until all 96 rows have been worked, ending with RS facing for next row. Cast off.

Edging

Using 5mm (US 8) circular needle and yarn A, pick up and knit 68 sts evenly along each side. 272 sts.

Working in rounds throughout proceed as follows:

Round 1: * K1, M1, P68, M1, rep from * 3 times more. 280 sts.

Round 2: * K1, M1, P70, M1, rep from * 3 times more. 288 sts.

Round 3: Using yarn H * K1, M1, K72, M1, rep from * 3 times more. 296 sts.

Round 4: * K1, M1, K74, M1, rep from * 3 times more. 304 sts.

Round 5: Using yarn A * K1, M1, K76, M1, rep from * 3 times more. 312 sts.

Round 6: * K1, M1, P78, M1, rep from * 3 times more. 320 sts.

Round 7: * K1, M1, P80, M1, rep from * 3 times more. 328 sts.

Round 8: * K1, M1, P82, M1, rep from * 3 times more. 336 sts.

Round 9: Using yarn H * K1, M1, K84, M1, rep from * 3 times more. 344 sts.

Round 10: * K1, M1, K86, M1, rep from * 3 times more. 352 sts.

Round 11: Using yarn A * K1, M1, K88, M1, rep from * 3 times more. 360 sts.

Round 12: * K1, M1, P90, M1, rep from * 3 times more. 368 sts.

Round 13: * K1, M1, P92, M1, rep from * 3 times more. 376 sts.

Round 14: Using yarn H * K1, M1, K94, M1, rep from * 3 times more. 384 sts.

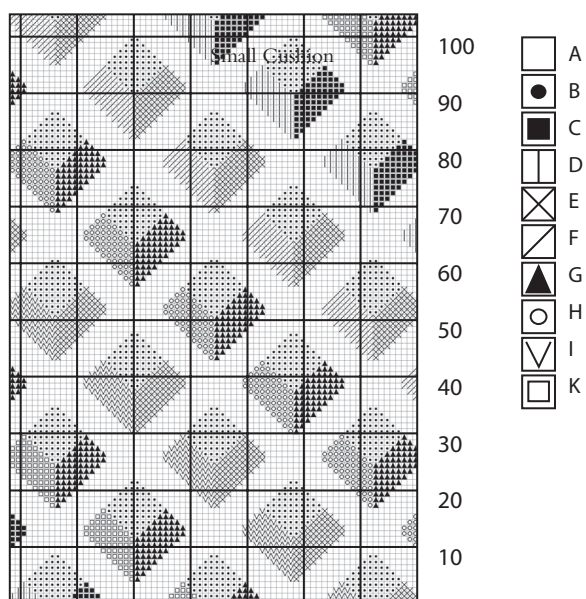
Round 15: * K1, M1, K96, M1, rep from * 3 times more. 392 sts. Cast off.

MAKING UP

Press as described on the information page.

Trim backing fabric to size of knitted section plus seam allowance along all 4 edges. Sew fabric and knitted fabric together along 3 edges, insert cushion pad and close 4th side.

Small Cushion



Large Cushion

60 cm cushion

